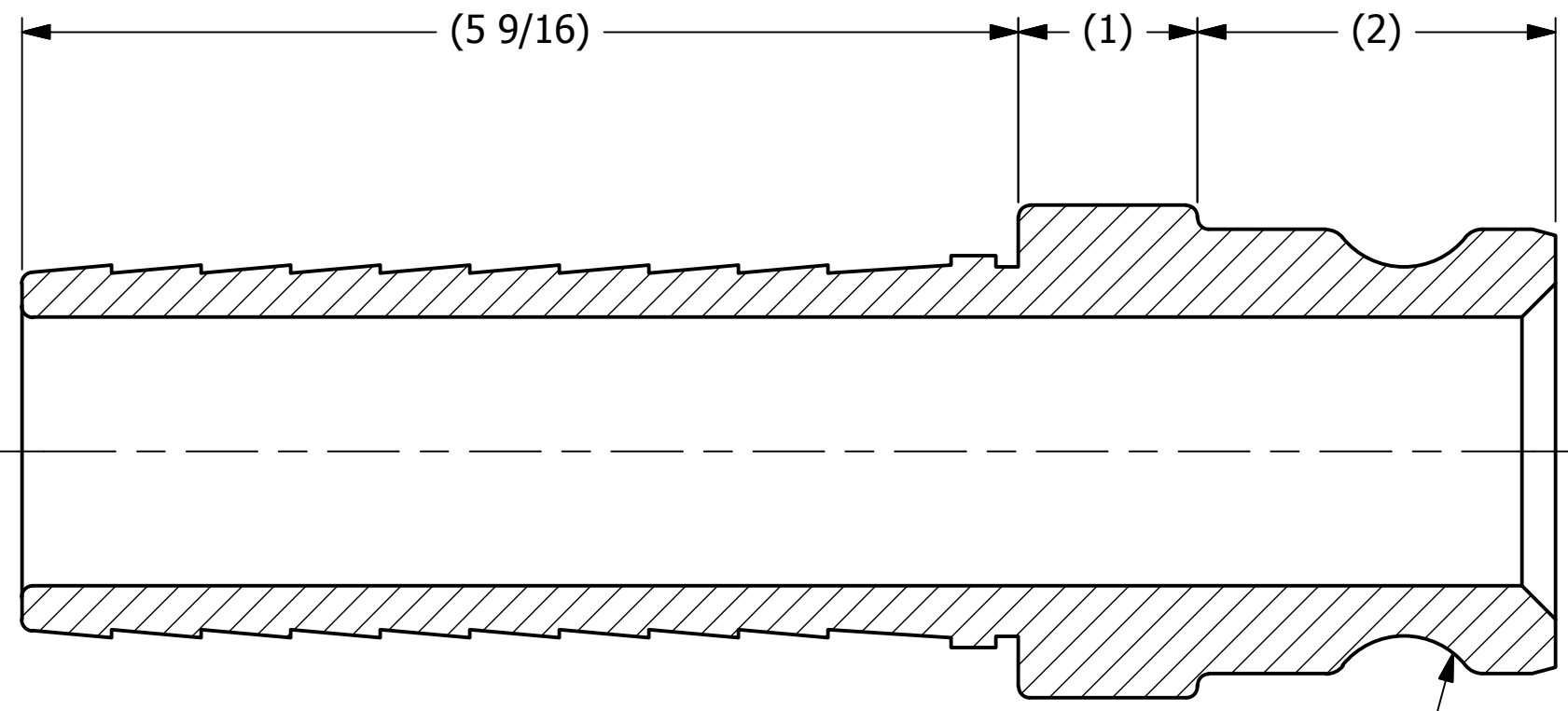
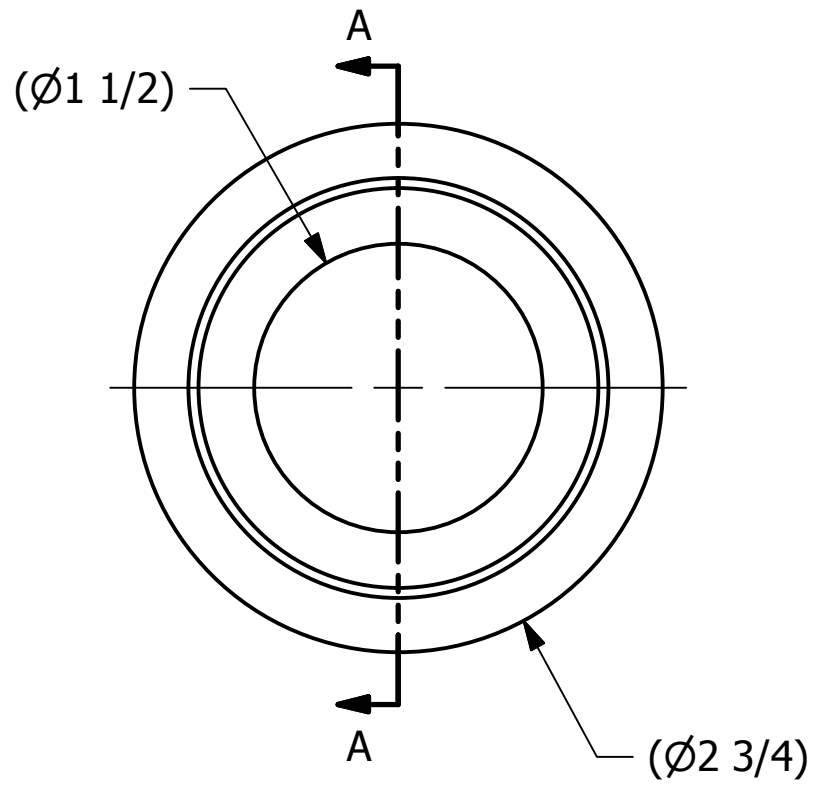


SALES DRAWING

SALES DRAWING



SECTION A-A

2" CAM GROOVE

REV	BY	DATE	DESCRIPTION
C	JG	6-27-18	ADDED MARKING NOTES
B	TAK	5-10-12	ADDED GROOVE, BOM. REV. NOTE
A	ACC	5-2-05	ADDED PART INTO THE SYSTEM

<small>UNLESS OTHERWISE SPECIFIED DIMENSIONAL TOLERANCES</small> FRACTIONAL: ±1/16 X.XX: ±.03 X.XXX: ±.015 ANGULAR: ±1° <small>DEBURR ALL SHARP EDGES. ALL MACHINED SURFACES TO HAVE A 125 RMS FINISH UNLESS NOTED OTHERWISE.</small>	DRAWN BY:	ACC
	CHECKED BY:	PJG
	PROTOTYPE BY:	ACC
	PROTOTYPE DATE:	5/2/2005
	APPROVED FOR PRODUCTION BY:	PJG
THIRD ANGLE PROJECTION	PRODUCTION DATE:	5/2/2005

<b>SALCO PRODUCTS, INC.</b>		
PART NAME: <b>HOSE BARB 2"</b>		
MATERIAL: <b>SALCO PE</b>		
PROJECT #: <b>030708</b>	SHEET #: <b>1 OF 1</b>	SCALE: <b>1:1</b>
DRAWING #: <b>B18641</b>	PART #: <b>HS2KEP</b>	

THIS PRINT, PROPERTY OF SALCO PRODUCTS INC., CONTAINS PROPRIETARY INFORMATION AND MUST NOT BE COPIED, REPRODUCED, OR USED DETRIMENTALLY TO OUR INTEREST.